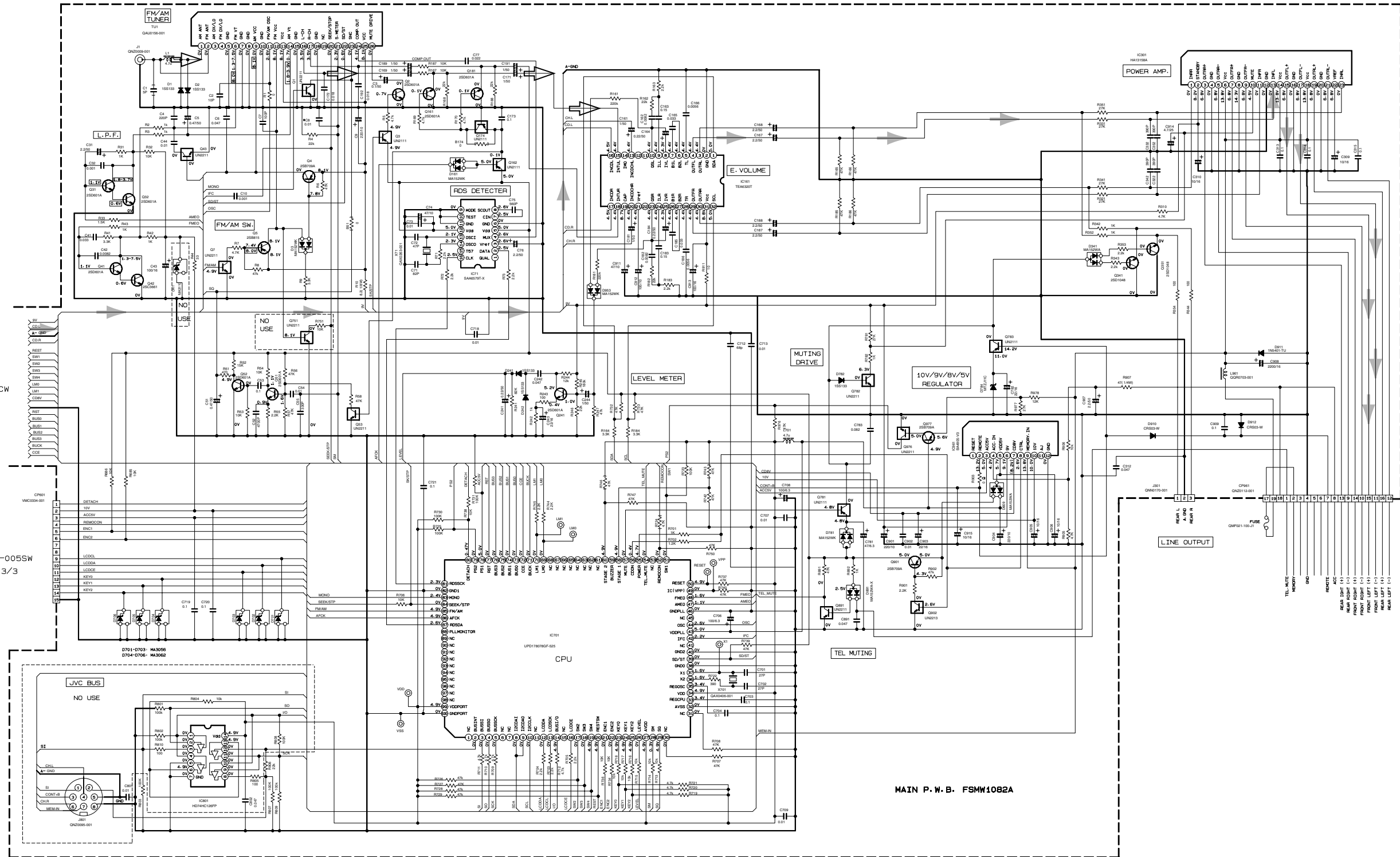


Block diagram

Standard schematic diagrams

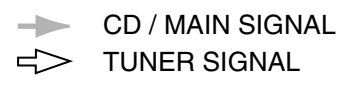
Receiver & power amplifier circuit



TO
FSDH3159-005CW
SHEET 2/3

TO
FSDH3159-005SW
SHEET 3/3

MAIN P.W.B. FSMW1082A



■ CD Servo control circuit

5

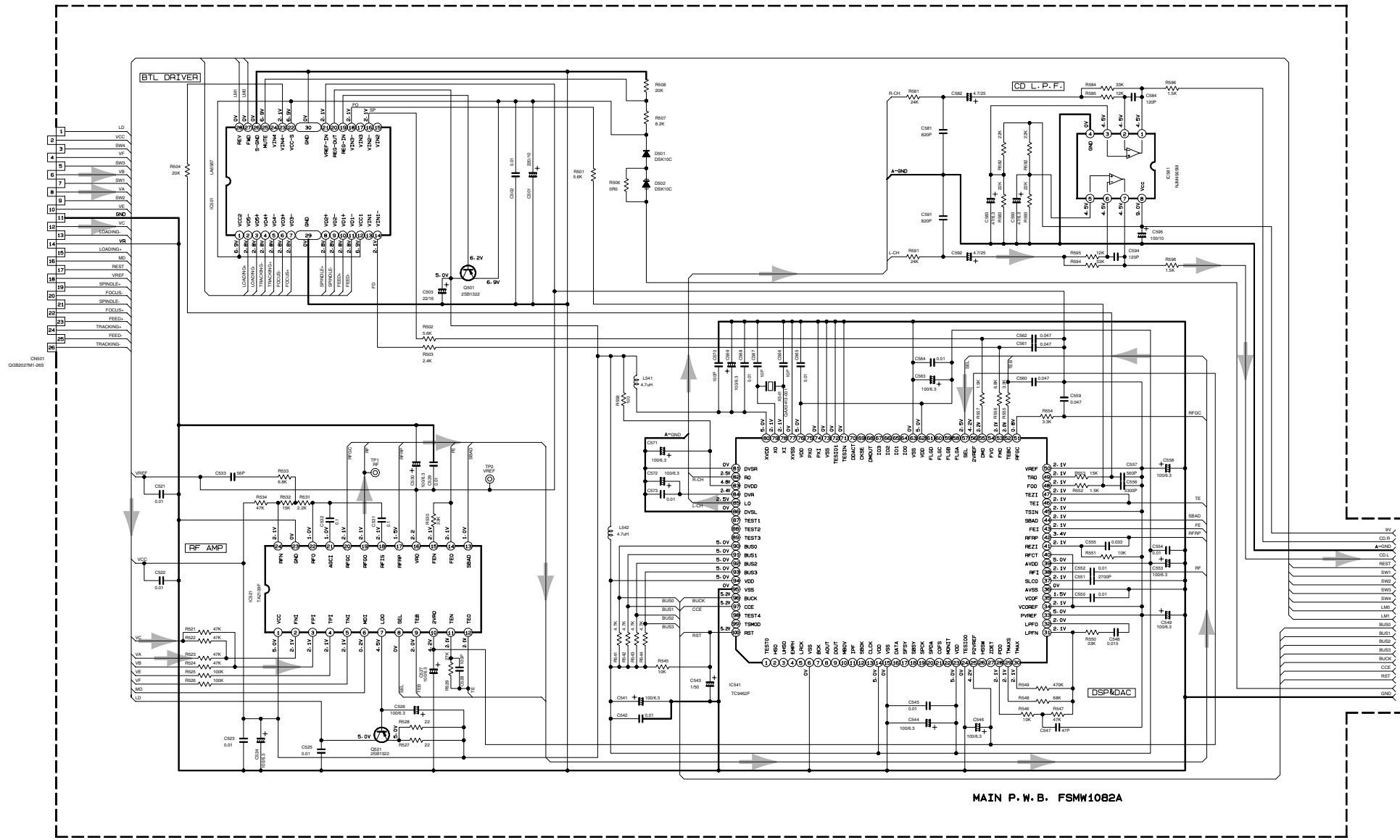
4

3

2

1

TO
CD MECHA
(BDL1089-001M)



TO
FSDH3159-005TW
SHEET 1/3

➔ CD / MAIN SIGNAL

■ LCD Driver circuit

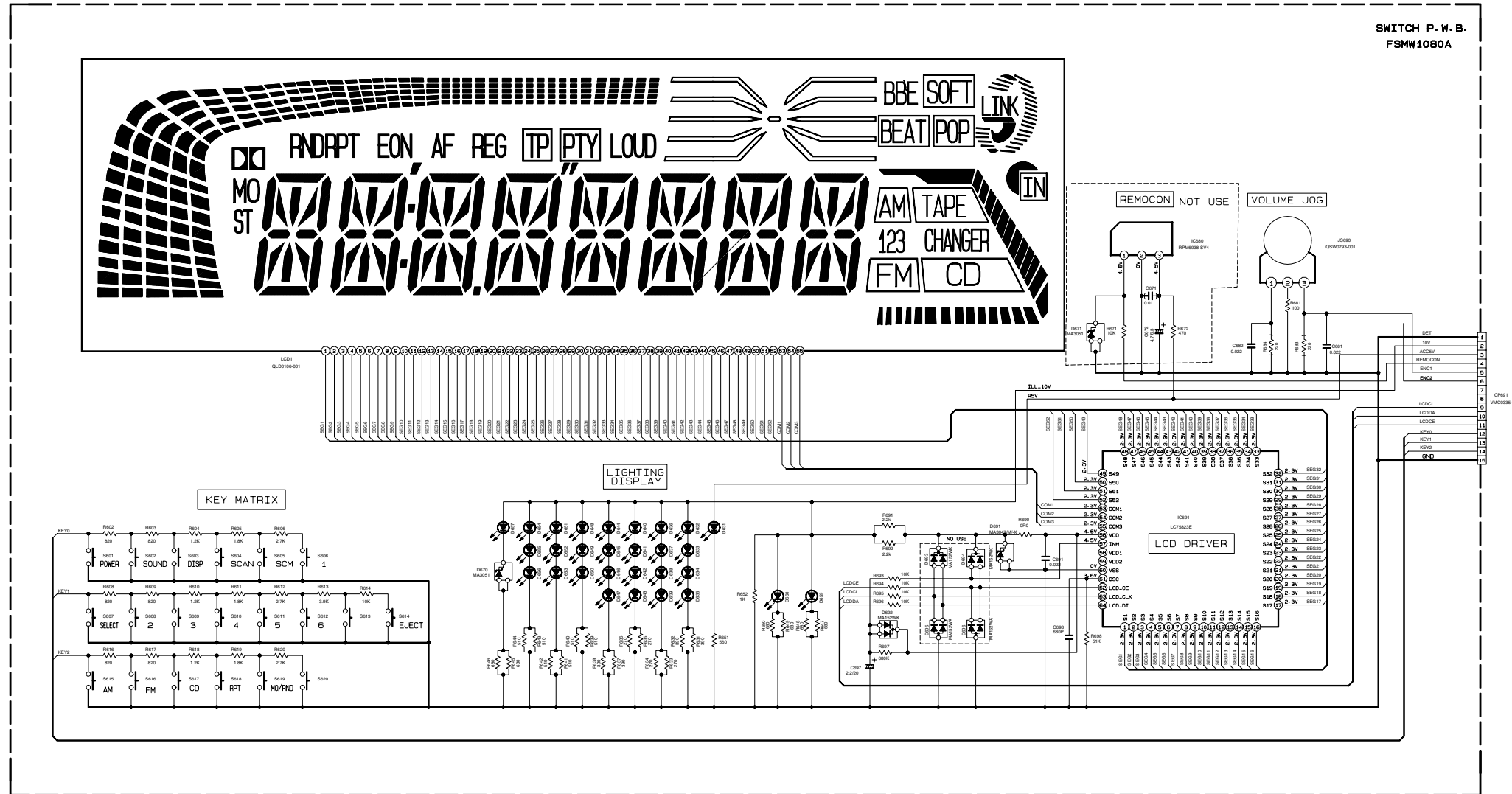
5

4

3

2

1



FRONT CIRCUIT BOARD SECTION

REF. NO.	PART NO.
S901-S920	NW0124-001X
S932-S944	SH-310V7/A/-X
S949-S954	
S959-S960	NSPW31085/8RS
S961	SH-315LT/ANV/-X
S971-S973	NOT USED
S2980-S2971-S2972	NOT USED

- NOTES
1. VOLTAGES ARE DC-MEASURED WITH A DIGITAL VOLT METER WITHOUT INPUT SIGNAL CONDITION—CD MODE.
 2. UNLESS OTHERWISE SPECIFIED, ALL RESISTORS ARE 1/10W ±5% METAL GLAZE RESISTOR. ALL CAPACITORS ARE 50V OR 25V OR 16V CERAMIC CAPACITOR. ALL RESISTANCE VALUES ARE IN Ω/M. ALL CAPACITANCE VALUES ARE IN μF(P=PF). ALL E-CAPACITORS ARE SHOWN IN THE FORM OF CAPACITANCE(μF)/RATED VOLTAGE(V). T ----- T. S. E. CAPACITOR